



GRAWILLS SPECIALTY LIMITED

COMPANY PROFILE

Head Office

Plot C3 Rumuogba Estate, Artillery Port Harcourt, Rivers State, Nigeria.
(Shaka's Place Opp. Fidelity Bank, Aba Road)

Phone Number

+2349133677145, +2348060983535, +234706670140

Email Address

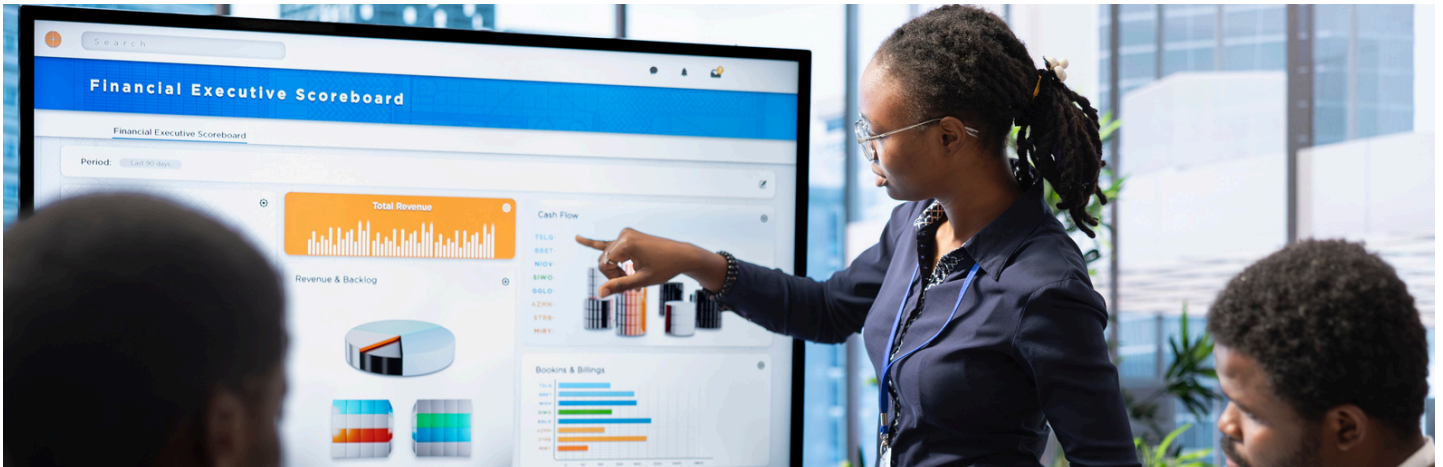
grawillspecialty@gmail.com

www.grawillspecialtyltd.com

Table Of Content

| | |
|---|----|
| Table Of Content | 2 |
| Company Overview | 3 |
| About Us | 4 |
| Mission, Vision, Core Values | 4 |
| Message From CEO/MD | 5 |
| Organisational Chart | 6 |
| Our Business and Services | 7 |
| Technical Capabilities And Expertise | 12 |
| Regulatory Compliance and Certifications | 12 |
| Equipments Tools And Technology | 13 |
| Ethics and Corporate Governance | 14 |
| Health, Safety, Security & Environment (HSSE/QHSE) Policy | 15 |
| Local Content and Community Relations | 16 |
| Sustainability and Environmental Initiative | 17 |
| Job Executed With Alpha OilWell /Our Partners | 18 |
| Our Recent Jobs | 25 |
| Picture Gallery | 27 |
| Equipment Gallery | 28 |
| Our Clients | 29 |
| Contact Us | 30 |

Company Overview



Grawill Specialty Limited is a full-service oil and gas company with a strong track record in delivering safe, efficient, and innovative energy solutions across Nigeria and the broader West African region. Established to meet the growing demands of the oil and gas industry, the Company has built a reputation for technical excellence, operational efficiency, and integrity-driven service delivery.

Our operations span the entire oil and gas value chain, including upstream exploration and production support, engineering, procurement, and construction (EPC), marine and logistics services, well intervention, and maintenance services. We serve a diverse range of clients, from major operators and marginal field owners to independent service companies, consistently providing solutions tailored to the unique challenges of the region.

The Company's strength lies in its multidisciplinary workforce, consisting of highly skilled engineers, technicians, and specialists with hands-on experience in drilling, civil and structural engineering, marine operations, and asset management. Supported by modern equipment, advanced technology, and best-in-class operational practices, we ensure projects are executed safely, efficiently, and to the highest quality standards.

We are guided by a commitment to safety, environmental sustainability, and local content development, aligning all operations with regulatory frameworks such as NUPRC, NIPEX, NCDMB, API, and ISO standards. Our approach emphasizes community engagement, workforce empowerment, and social responsibility, ensuring that host communities benefit directly from our presence and operations.

Over the years, Grawill Specialty Limited has successfully executed numerous projects, from well intervention and drilling support to complex EPC and offshore marine operations, demonstrating our capacity to deliver complex projects on schedule and within budget. Our proven ability to adapt to challenging environments—including swamp, offshore, and remote locations—sets us apart as a reliable partner in the oil and gas industry.

By combining technical expertise, operational excellence, and ethical business practices, the Company remains committed to creating sustainable value for clients, stakeholders, employees, and communities. Our vision is to be recognized as a trusted and innovative leader in the Nigerian oil and gas sector, continuously raising industry standards and contributing to national energy security and economic development.



About Us

Over the past ten years, we have built a strong and consistent record of excellence across multiple operations within the oil and gas sector. Our experience spans field operations, engineering support, project execution, safety compliance, and technical service delivery. Throughout our career, We have contributed to high-value projects while ensuring efficiency, safety, and operational integrity.

Vision

To become the most trusted and innovative leader in the global oil and gas industry—advancing progress and sustainability through cutting-edge technology and responsible operations. We envision a future where our activities support a cleaner, more efficient energy landscape while fostering economic growth and long-term value.

Mission

To emerge as the most trusted and innovative leader in the global oil and gas sector, championing progress and sustainability through advanced technologies and responsible operational practices.

Core Values

Safety First

Integrity

Excellence

Accountability

MESSAGE FROM THE CEO



Engr. Emufo Eze Princwill Aroghene
CEO/MD

At Grawill Specialty Limited, our journey is built on a clear vision: to deliver safe, reliable, and sustainable oil and gas solutions while creating long-term value for our clients, stakeholders, and host communities.

Since our inception, we have remained committed to operational excellence, integrity, and innovation. The oil and gas industry is dynamic and challenging, and we have positioned our Company to respond effectively through strong technical capability, skilled manpower, modern technology, and strict adherence to regulatory and safety standards.

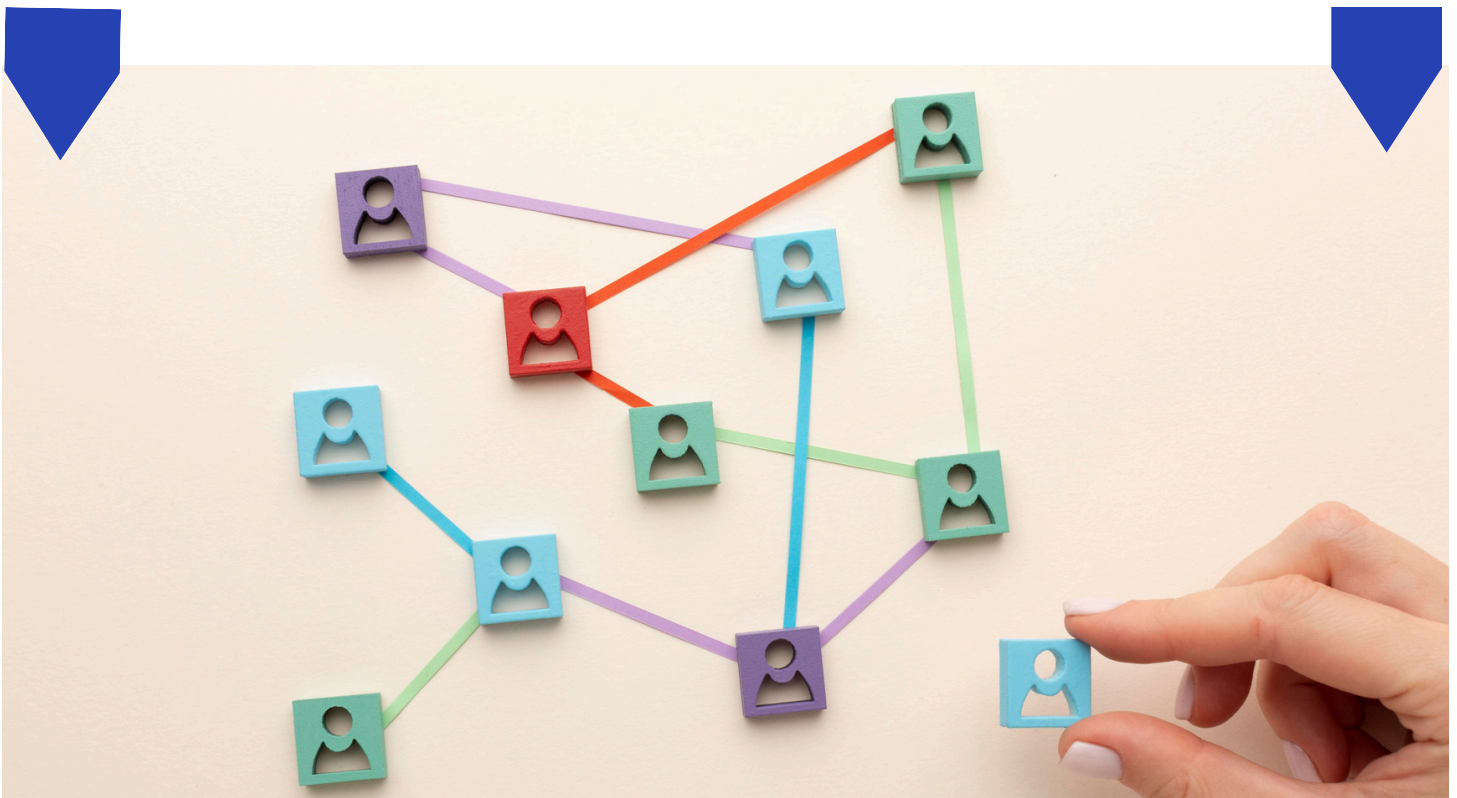
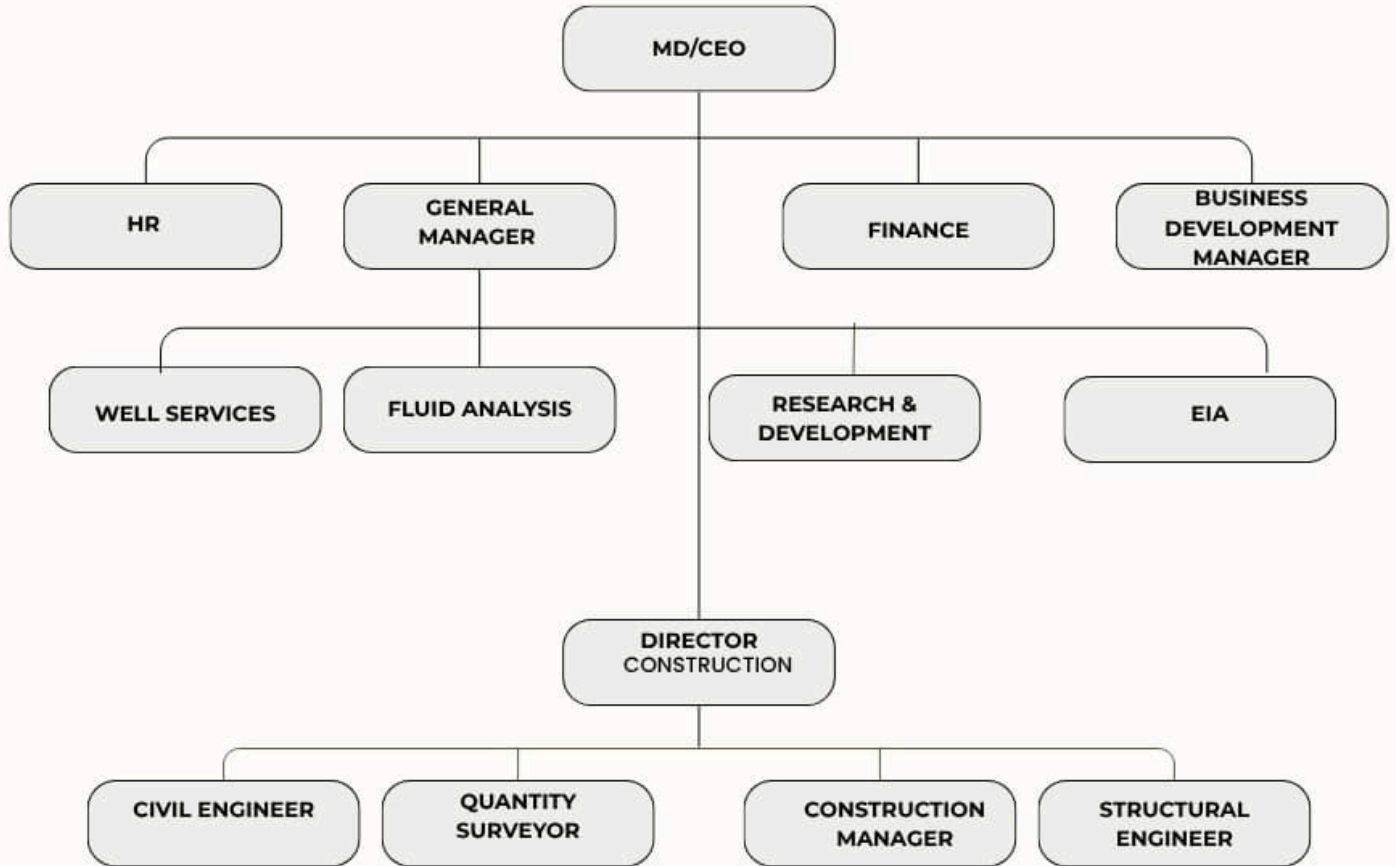
Our success is driven by our people—dedicated professionals who share a common commitment to quality, safety, and continuous improvement. We place Health, Safety, Security, and Environmental (HSSE) excellence at the core of all our operations, ensuring that every project is executed responsibly and sustainably.

As an indigenous company, we are deeply committed to local content development and community engagement, empowering Nigerian talent and fostering positive relationships with our host communities. We believe that sustainable business growth goes hand in hand with social responsibility and environmental stewardship.

Looking ahead, Grawill Specialty Limited will continue to invest in technology, capacity building, and strategic partnerships to meet the evolving needs of the energy sector. We remain focused on delivering value, maintaining trust, and contributing meaningfully to Nigeria's energy future.

On behalf of the Board and Management, I thank our clients, partners, employees, and communities for their continued support and confidence in our Company. Together, we will continue to build a safer, stronger, and more sustainable energy industry.

ORGANISATIONAL CHART



OUR BUSINESSES AND SERVICES

Completion and Well Intervention Services

- Hydraulic/Snubbing unit deployment Services.
- BHP Survey using Memory Gauges.
- SCSSV Retrieval and Installation.
- Well Integrity Test.
- Wax Cutting.
- Gas Lift Valve Retrieval and Installation.
- Zone Change.
- Swabbing.
- Fishing, downhole, Plugging and Unplugging.
- Well Completion.
- Bottom Hole Fluid Sampling.
- Integrated Field Development Studies
- Field Development Planning.
- Work Over Rig-750hp Rig Deployment.
- Well-bore cleaning services.
- Slick Line and Wire Line Interventions.
- Coil Tubing Intervention.
- Mechanical Intervention.
- Filtration services.
- Pumping services for Acid Matrix Stimulations, Open hole and Cased Hole Frac-Pac and Gravel Pack Sand Control.



Pipeline Services

- Pipeline Pigging
- Pipeline Cleaning, Flushing, Gauging.
- Intelligent Pigging.
- Pipeline Pressure Testing (Hydro Testing).
- Pipeline Nitrogen Packing/Inserting.
- Pipeline Dewatering and Drying.
- Pipeline De-oiling



Construction services

- Laying of Oil and Gas Pipeline.
- Fabrication and Installation Services.
- Construction and Maintenance Services
- Facilities and Platforms.
- Facilities Upgrade and Rehabilitation Services.
- Facility Construction and Commissioning Services.
- Cementing and Pumping services



OUR BUSINESSES AND SERVICES

Drilling And Well Integrated Services

- Managed Pressure Drilling (MPD) Services
- Gyro While Drilling (GWD) Services
- Lean Profile Well designs
- Extended Reach Well Drilling Design
- Formation Pressure While Drilling (FPWD) Services
- Continuous Circulation Drilling (CCD) Services
- Work-over services snubbing unit for onshore and offshore services.
- Land Rig Operation – 1000HP, 2000HP, and 3000HP.
- Swamp/Barge Rig Operation – 3000HP. 2000HP, 10,000 / 15,000 PSI
- Rigless Support Equipment Deployment.
- Directional Drilling Services.
- Turbo-Drilling services.
- Mud Fluid/Logging Engineering services.
- Rotating Liner Hanger services.



Material / Tools Services

- We provide the following tools for Well services;
- Blow out preventers.
- RSS- downhole tools.
- Single & Multiple Points Survey Tools.
- Skips & Storage Tanks.



Material Procurement, Supply, and Logistic services

- Enhancing Fluids.
- Oil & Gas Pre-treatment.
- Tensioner System Fluids.
- Drilling Chemicals.
- Motion Compensator Fluids.
- Corrosion Inhibitors.
- Drilling Detergents.
- Tubulars and pipe procurement and supply.
- Equipment procurement.
- Shaker screens supply.



OUR BUSINESSES AND SERVICES

Maintenance Services

- OCTG/Pipeline & Pipe Cleaning Services.
- Tank Cleaning Maintenance Services.

Fabrication and Field Engineering Services

- Skips & Storage Tank.
- Long-Term Equipment Storage.
- Warehouse.
- Office Space.
- Accommodation.
- Barges.
- Mechanical engineering.
- Electrical engineering.

Exploration and Production Drilling Support Services

- Inspection Services.
- Health & Safety Consultancy Services.
- Man Power & Development.
- Fluid Handling Awareness Training.
- Marine Spread Services.
- Well Kill & Stimulation Services.
- Oil-Field Logistic Service.
- Well Testing Services.
- Technical Support Services.
- Brine Filtration Services.
- Pipeline Monitoring System.
- Geological Study.
- Laboratory Services.
- Rig Move Services.
- Collaborative work Environment Engineering

Digital & Technical Support Services

- Data acquisition and technical reporting
- Operational performance analysis
- Digital documentation and asset records management
- Engineering software and field data integration



OUR BUSINESSES AND SERVICES

Reservoir Management Services Consultancy

- Seismic Interpretation (incl. Quantitative Interpretation),
- Geological/Static Modelling.
- Petro-physical Evaluation (Open and Cased Hole Evolution).
- Reservoir Stimulation Study.
- Well Test Analysis and Other Single Well Studies.
- Reserve Estimation Study.
- Gas-Lift Design and Optimization.
- Production System Optimization/Well Problem Diagnosis.
- Supervision of BHP Tests.
- Integrated Field Development Studies.
- Software Capability – PETREL, INTERSECT, ECLIPSE, GEOGRAPHIX/PRIZM, MBAL, IPM SUITE



Environmental Services

Formation Water Analysis

- Environmental Impact Assessment (EIA).
- Post Impact Assessment Studies (PIAS).
- Environmental Baseline Study (EBS).
- Environmental Evaluation Study
- Environmental Sensitivity Index Mapping.
- Environmental Modelling/Simulation Studies.
- Due Diligence Investigation and Site Closure.



Analytical Laboratory Services

- Water Portability Test.
- Soil Analysis.
- Crude Oil Biomarker Fingerprinting.
- Microbiology Analysis
- Plant/Animal Tissue Analysis.
- Calibration Services

Production Chemistry Services

- Compatibility Test.
- Crude Oil Fingerprint Analysis.
- Formation Water Characterization.
- Unknown Solid Characterization/Identification.
- Residual Thiazine in Analysis.
- Sand Cut and Particle Size Distribution.
- Organic Acid Analysis

Microbiology Laboratory Analysis

- Microbiology Analysis.
- Molecular Biology Analysis (DNA Sequencing).



OUR BUSINESSES AND SERVICES

Research Development and Incubation Services

- Enhanced Oil Recovery particularly using locally derived alkali and surfactant.
- Relative Permeability (Steady and Unsteady state).
- Rock-Fluid Compatibility Studies.
- Wettability Studies
- Surface and Interfacial Tension.
- Particle Size Analysis.
- Minimum Miscibility Pressure and Other Core Analysis.
- X-Ray Diffraction
- High-Resolution Digital Core Photography.
- Spectral Gamma Log
- Core Storing and Preservation



Project Management Services

- Man Power Supply.
- Quality Assurance and Control (QA/QC).
- Project Feasibility Reports.
- Project Plan, Schedules, and Control.
- Supervision of Engineering, Construction, and Procurement.
- Project Close-out.



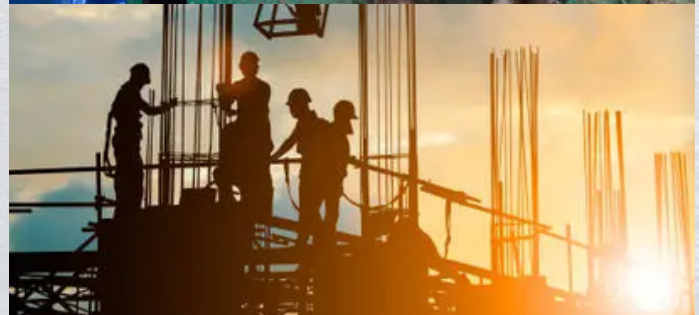
PVT Services

- Surface Sampling.
- Bottom hole Sampling.
- On-site Measurement.
- PVT Analysis on Reservoir Fluids.
- Oil Field Water Analysis.
- Solid Detection (Asphaltene and Wax in live crude).
- Flow Assurance Studies.
- Fluid Capability Studies.
- Reservoir Oil Fingering/Geochemical Analysis.
- Hydrocarbon Fluids Compositional Analysis.
- Advanced Hydrocarbon Phase Behavior.
- Emulsion Forming Tendency and Treatment.
- Crude Assay Tracer Sampling and Analysis.



Civil Engineering

- Concept Design of Roads, Coverts and Underground Layouts.
- Structural Drawings (Foundations, Building, ETC).
- Civil Contract Tender Specification.



TECHNICAL CAPABILITIES AND EXPERTISE

Our company possesses strong technical depth and proven operational capability across the oil and gas value chain, delivering integrated solutions that meet international standards while addressing complex field challenges.

Technical Strengths

- Comprehensive expertise in upstream, midstream, and downstream operations
- Strong engineering capabilities covering design, construction, installation, and commissioning
- Advanced knowledge of drilling support, mud engineering, mud logging, and well intervention services
- Robust asset integrity, maintenance, and rehabilitation expertise
- Effective project execution in onshore, offshore, swamp, and shallow-water environments
- Strict adherence to HSE, quality, and regulatory compliance frameworks

Specialized Competencies

- Well intervention, workover, and production optimization
- Engineering construction, civil, mechanical, and structural works
- EPC and brownfield project execution
- Marine services, dredging, and offshore logistics support
- Facility rehabilitation, refinery and petrochemical laboratory setup
- Pipeline fabrication, installation, testing, and maintenance
- Shutdown, turnaround, and maintenance (STAM) services
- Technical manpower supply and multidisciplinary project management

Industry Experience

- Extensive experience supporting major operators, marginal field owners, and service companies
- Successful execution of projects across Nigeria's key oil-producing regions
- Track record of delivering projects safely, on schedule, and within budget
- Experience working in compliance with NUPRC, DPR legacy requirements, NIPEX, and international standards (API, ISO)
- Over a decade of hands-on industry experience delivering value-driven solutions

REGULATORY COMPLIANCE AND CERTIFICATIONS

Grawill Specialty Limited operates fully in compliance with all national and international oil and gas regulations. Which includes:

1. Adheres to NUPRC, NCDMB, NESREA, DPR, and CAC statutory requirements.
2. Implements environmental, safety, and operational monitoring systems.
3. Conducts regular audits and inspections to ensure regulatory conformity.
4. Maintains a strong focus on local content development and indigenous participation.
5. Holds ISO 9001:2015 for quality management.
6. Holds ISO 14001:2015 for environmental management.
7. Holds ISO 45001:2018 for occupational health and safety.
8. Complies with relevant API standards for equipment and operations.
9. Secures project-specific certifications as required by clients or regulators.

Our Compliance ensures operational excellence, safety, and environmental protection. Reinforces trust, credibility, and reputation as a responsible industry partner.

EQUIPMENT, TOOLS, AND TECHNOLOGY

Our Company utilizes modern, industry-approved equipment, tools, and technologies to ensure safe, efficient, and reliable execution of oil and gas operations across onshore, offshore, and marine environments.

1. Drilling & Well Services Equipment

- Drilling rigs (land, swamp, and offshore)
- Mud mixing systems and shale shakers
- Desanders, desilters, and centrifuges
- Mud logging units and gas detection systems
- Well intervention tools and wireline equipment
- Blowout preventers (BOPs) and well control systems

2. Engineering, Construction & Fabrication Equipment

- Heavy-duty cranes and lifting equipment
- Welding machines and cutting tools
- Steel fabrication and machining equipment
- Concrete batching plants and civil works machinery
- Pipeline welding, bending, and testing equipment
- Non-Destructive Testing (NDT) tools

3. Marine & Offshore Equipment

- Tugboats, barges, and crew boats
- Dredgers and marine construction equipment
- Anchoring, mooring, and towing systems
- Offshore lifting and installation tools
- Navigation and marine safety equipment.

4. Maintenance, Inspection & Integrity Tools

- Ultrasonic testing (UT) and radiography equipment
- Magnetic particle and dye penetrant testing tools
- Corrosion monitoring and cathodic protection systems
- Pressure testing and leak detection equipment
- Asset integrity monitoring tools

5. Environmental & Safety Equipment

- Gas detectors and personal monitoring devices
- Spill containment and oil recovery equipment
- Firefighting and emergency response systems
- Personal Protective Equipment (PPE)
- Environmental monitoring and sampling tools

6. Digital Technology & Software

- Engineering design and analysis software
- Project planning and scheduling tools
- Digital data acquisition and reporting systems
- Asset management and maintenance software
- HSE and compliance monitoring platforms



ETHICS AND CORPORATE GOVERNANCE

Policy Statement

Our Company is committed to conducting its business with the highest standards of integrity, transparency, accountability, and professionalism. Strong corporate governance and ethical conduct are fundamental to building stakeholder trust, ensuring regulatory compliance, and achieving sustainable business growth.

Code of Ethics and Business Conduct

Our Company upholds a comprehensive Code of Ethics that guides the conduct of its directors, management, employees, and contractors. Key ethical principles include:

- Honesty, fairness, and transparency in all business dealings
- Zero tolerance for bribery, corruption, fraud, and unethical practices
- Compliance with all applicable laws, regulations, and industry standards
- Avoidance and disclosure of conflicts of interest
- Protection of confidential and proprietary information
- Respect for human rights, diversity, and equal opportunity

Corporate Governance Framework

Our Company operates under a robust corporate governance structure designed to ensure effective oversight, strategic direction, and responsible decision-making.

Key governance elements include:

- A structured Board of Directors providing strategic oversight and guidance
- Clearly defined roles and responsibilities for the Board and Management
- Transparent decision-making and reporting processes
- Effective internal controls and risk management systems
- Regular performance monitoring and audits

Compliance and Risk Management

- Full compliance with regulatory requirements (NUPRC, CAC, FIRS, NIPEX)
- Implementation of internal compliance policies and procedures
- Identification, assessment, and mitigation of operational, financial, and reputational risks
- Periodic internal and external audits to ensure accountability

Anti-Corruption and Whistleblowing

- Strict enforcement of anti-bribery and anti-corruption policies
- Secure and confidential whistleblowing mechanisms for reporting unethical conduct
- Protection for whistleblowers against retaliation
- Prompt investigation and corrective action on reported violations

Transparency and Accountability

- Accurate and timely financial and operational reporting
- Clear documentation of policies, procedures, and decisions
- Accountability at all organizational levels
- Open communication with clients, regulators, and stakeholders

Continuous Improvement

Our Company regularly reviews and updates its ethics and governance framework to reflect evolving regulations, industry standards, and best practices.

HEALTH, SAFETY, SECURITY & ENVIRONMENT (HSSE / QHSE) POLICY

Policy Statement

Our Company is fully committed to conducting all its operations in a manner that protects the health and safety of employees, contractors, clients, host communities, and the environment, while ensuring the security of assets and compliance with applicable laws and industry standards. We recognize that all incidents are preventable and that excellence in HSSE performance is fundamental to sustainable business success.

Our Company is committed to:

1. Health & Safety

- Providing a safe and healthy working environment for all employees and stakeholders
- Preventing work-related injuries, illnesses, and occupational hazards
- Ensuring proper use of personal protective equipment (PPE) and safe work practices
- Conducting regular risk assessments, toolbox talks, and safety training

2. Security

- Protecting personnel, assets, facilities, and information from security threats
- Implementing effective access control, asset protection, and emergency response measures
- Collaborating with relevant authorities and host communities to maintain secure operations

3. Environmental Protection

- Preventing pollution and minimizing environmental impact from all activities
- Promoting efficient use of energy and natural resources
- Ensuring proper waste management, spill prevention, and environmental remediation
- Complying with environmental laws, regulations, and best practices

4. Quality Assurance

- Delivering services that meet or exceed client expectations
- Implementing robust Quality Management Systems (QMS)
- Ensuring continuous improvement through audits, inspections, and corrective actions
- Maintaining compliance with ISO, API, and applicable industry standards

Implementation & Responsibilities

- HSSE is a shared responsibility of management, employees, and contractors
- Management shall provide leadership, resources, and oversight for HSSE performance
- Employees and contractors are required to comply with all HSSE rules and procedures
- Unsafe acts, conditions, and incidents must be reported immediately

Objectives

- Achieve zero harm to people and the environment
- Maintain continuous HSSE improvement through monitoring and review
- Ensure full compliance with regulatory requirements (NUPRC, NIPEX, ISO, API)
- Foster a strong HSSE culture across all operations

Continuous Improvement

Our Company shall regularly review this policy to ensure its continued relevance, effectiveness, and alignment with business objectives and regulatory requirements. This HSSE / QHSE Policy applies to all Company operations, locations, and personnel. Management is committed to leading by example and ensuring that HSSE excellence remains a core value of our business.

LOCAL CONTENT AND COMMUNITY RELATIONS

Policy Statement

Our Company is committed to promoting local content development and maintaining positive, mutually beneficial relationships with host communities. We recognize that sustainable operations depend on empowering local stakeholders, developing indigenous capacity, and fostering trust through responsible engagement.

Local Content Development

In line with the Nigerian Oil and Gas Industry Content Development (NOGICD) Act, the Company is dedicated to maximizing Nigerian participation in all aspects of its operations by:

- Prioritizing employment of qualified Nigerian professionals and technicians
- Supporting skills transfer through structured training, mentoring, and capacity development programs
- Engaging Nigerian-owned vendors, suppliers, and service providers where feasible
- Promoting use of locally manufactured materials, equipment, and services
- Developing indigenous technical capabilities through partnerships and technology transfer.

Employment and Capacity Building

- Recruitment and development of local manpower across technical and non-technical roles
- Continuous training, certification, and competence development programs
- Internship, apprenticeship, and graduate development opportunities for host community youths
- Leadership development for Nigerian professionals

Community Relations

Our Company maintains proactive and transparent engagement with host communities by:

- Establishing open communication channels with community leaders and stakeholders
- Respecting local customs, culture, and social structures
- Addressing community concerns promptly and fairly
- Promoting peaceful coexistence through dialogue and stakeholder engagement

Community Development Initiatives

- Support for education, skills acquisition, and vocational training programs
- Participation in health, safety, and environmental awareness initiatives
- Support for infrastructure development where applicable
- Encouraging local entrepreneurship and small business development

Security and Social Responsibility

- Collaborating with host communities to ensure safe and secure operations
- Promoting community-based security and conflict prevention mechanisms
- Upholding ethical conduct and zero tolerance for discrimination, harassment, or exploitation

Compliance and Governance

- Full compliance with NCDMB, NUPRC, and other regulatory requirements
- Transparent reporting of local content performance
- Continuous monitoring and improvement of community engagement practices

SUSTAINABILITY AND ENVIRONMENTAL INITIATIVE

Environmental Stewardship

Our Company is committed to responsible environmental stewardship and the protection of ecosystems in all areas of operation. We recognize our duty to minimize environmental impact while delivering energy solutions safely and efficiently.

Our environmental stewardship approach includes:

- Compliance with all applicable environmental laws and regulations
- Proactive identification and mitigation of environmental risks
- Environmental Impact Assessments (EIA) and Environmental Management Plans (EMP)
- Spill prevention, control, and emergency response preparedness
- Continuous environmental monitoring and reporting
- Protection of biodiversity and sensitive habitats

Waste Management

Our Company adopts a structured and compliant waste management framework aimed at minimizing waste generation and ensuring safe handling, treatment, and disposal.

Key waste management practices include:

- Waste segregation at source (hazardous and non-hazardous waste)
- Safe storage, transportation, and disposal through licensed vendors
- Recycling and reuse of materials where practicable
- Proper handling and disposal of drilling waste, oily sludge, chemicals, and contaminated materials
- Documentation and tracking of waste streams to ensure regulatory compliance
- Training of personnel on waste handling and environmental protection

Sustainability Initiatives

Our Company integrates sustainability into its business strategy by balancing operational efficiency, environmental protection, and social responsibility.

Our sustainability initiatives include:

- Reduction of emissions through efficient operations and energy management
- Promotion of cleaner technologies and environmentally friendly materials
- Water conservation and responsible water use practices
- Continuous improvement in environmental performance through audits and reviews
- Support for local content development and community sustainability programs
- Alignment with global ESG principles and sustainable development goals

Continuous Improvement and Compliance

- Regular environmental audits and inspections
- Performance monitoring against environmental KPIs
- Compliance with NUPRC, NESREA, and relevant international standards (ISO 14001)
- Ongoing review and enhancement of environmental policies and procedures

JOBS EXECUTED WITH ALPHA OIL WELL TECHNOLOGIES

SLICKLINE / ADVANCED SLICKLINE JOB CARD

1.3 TRACK RECORD AND EXPERIENCES EXECUTED IN THE PAST FIVE (5) YEARS

| CLIENT | SERVICE | WELL | YEAR OF SERVICE |
|--------------|--|------------------------|-----------------|
| RANO | Well completions | OLOYE 2 | 2025 |
| ELCREST | Well completion | GBETIOKUN 13 | 2024 |
| SEPLAT | Well completions | OBEN 56 | 2024 |
| ARADEL | Omega plug installation | OGBELE 12 | 2024 |
| ENERGY WORLD | Slickline campaign | IMOR FIELD | 2024 |
| FOLSTAJ/NEPL | Slickline campaign | CAWC 32, 48 & 49 | 2024 |
| ARADEL | BHP services | OMERELU 2ST | 2024 |
| ARADEL | Omega plug installation and gas lift operation | OGBELE 4ST | 2024 |
| CANDIX | BHP Campaign | CAWC FIELD | 2024 |
| SEPLAT | Well Intervention | OBEN 55 | 2024 |
| SEPLAT | Hole finder installation | OBEN 54 | 2024 |
| ALL GRACE | Gas lift operation | UBIMA 1 | 2024 |
| BAKER/EXXON | Omega plug installation | OSO 59 | 2024 |
| SEPLAT | Heavy duty fishing | SAPELE 2 | 2024 |
| SEPLAT | Well intervention campaign | SAPELE, OBEN, OKPOHURU | 2024 |
| ARADEL | Omega plug installation | OGBELE 8 | 2024 |
| SEPLAT | Magna Range Plug installation | SAPELE 25L | 2024 |
| ENERGY WORLD | BHP Campaign | | 2024 |
| SEPLAT | Well intervention | SAPELE 38ST | 2024 |
| ARADEL | BHP Campaign | OGBELE 8,12,13,&14 | 2024 |
| ARADEL | Gas lift operations | OMERELU 2ST | 2024 |

Provision of Slickline Services

Our Partners

AOS Orwell™



JOBS EXECUTED WITH ALPHA OIL WELL TECHNOLOGIES

SLICKLINE / ADVANCED SLICKLINE JOB CARD

| | | | |
|----------------------|--|---------------------------|------|
| H-PTP | Well completion | OGBELE 14 | 2024 |
| SEPLAT | Omega Plug installation | OVHOR 9 | 2024 |
| NEPL/COPDC | Well Intervention services | ABURA 8 & 11 | 2024 |
| SNEPCO | Well Intervention services | BONGA FIELD | 2024 |
| SEPLAT | Omega Plug setting | OVHOR 21 | 2024 |
| IBOM UPSTREAM | Omega Plug | IBOM FIELD | 2024 |
| GREEN ENERGY/LAKEOIL | BHP Campaign | OTAKIKPO 3S,2L & 5L | 2024 |
| SEPLAT | Well Intervention campaign | OKPOHURU, OROGHO & SAPELE | 2024 |
| INGENTIA | Well Completion | EGBOLOM 2 | 2024 |
| ARADEL | Omega plug installation and gas lift change out | OMERELU | 2024 |
| HALLIBURTON | BHP SURVEY | OLOMORO | 2024 |
| GREEN ENERGY | Well Intervention | UBMA 1LS | 2024 |
| BROADLOG/ELCREST | Omega Pug installation | OPUAMA 14 | 2024 |
| SEPLAT | Zone Isolation with Omega Plug | SAPELE 36 | 2024 |
| ELCREST/NEPL | Well Completion with Omega V-Zero Plug | GBETIOKUN 11 | 2023 |
| SEPLAT | Well Completion with Omega V-Zero Plug | OROGHO 8 | 2023 |
| SEPLAT | Well Completion with Omega V-Zero Plug | OHAJI SOUTH 9 | 2023 |
| ELCREST/NEPL | SWABBING, AND BHP SURVEY | GBETIOKUN 4ST | 2023 |
| ELCREST/NEPL | DUAL COMPLETION | GBETIOKUN 10 | 2023 |
| WAEP | XMAS TREE CHANGE OUT W/OMEGA RBP | KALAEKULE 12 | 2023 |
| SEPLAT | Zone Change Out/Omega V-zero Plug | OBEN 20T | 2023 |
| SEPLAT | Well Completion with Omega V-Zero Plug | OHAJI SOUTH 7 | 2023 |
| NPDC/ELCREST | Well Completion with Omega V-zero plug | SIBIRI 2 | 2023 |
| NPDC/ELCREST | Swabbing Operation | SIBIRI 1 | 2023 |
| NPDC/ELCREST | Swabbing Operation, Zone change out, BHP Operation and tubing leak detection | OPUAMA 14 | 2023 |

Provision of Slickline Services

Our Partners



JOBS EXECUTED WITH ALPHA OIL WELL TECHNOLOGIES

SLICKLINE / ADVANCED SLICKLINE JOB CARD

| | | | |
|--------------|---|--------------------------------------|------|
| NPDC/ELCREST | Swabbing and BHP Operation | OPUAMA 9 | 2023 |
| NPDC/ELCREST | Drift Run Operation | OPUAMA 12 | 2023 |
| HPTP | Well Completion with Omega V-zero plug | OGBELE 12 | 2023 |
| HPTP | Tubing Leak Detection Operation | IBIGWE 14 | 2023 |
| NPDC/ELCREST | Swabbing and BHP Operation | OPUAMA 3 | 2023 |
| NPDC/ELCREST | Well Completion with Omega V-zero plug | OPUAMA 17 | 2023 |
| GREEN ENERGY | Down Hole Safety Valve Installation and Kinley Perforation operation | UBIMA 1 | 2023 |
| SEPLAT | Zone Isolation with Omega V-zero plug | SAPELE 25 | 2023 |
| HPTP | Straddle Packer installation and Tubing Leak detection Operation | IBIGWE 14 | 2022 |
| GREEN ENERGY | Drift Run and Retrieval/Installation of Down Hole Safety Valve | UBIMA 1SS | 2022 |
| ELCREST/NPDC | Well Completion with Omega V-zero plug | OPUAMA 16 | 2022 |
| NPDC | Retrieval and Installation of downhole safety valve | ABURA 6 AND 11 | 2022 |
| NPDC | Drift Run, Retrieval and Installation of Down hole safety valve | ABURA 8 | 2022 |
| NPDC/ELCREST | Radioactive Source Retrieval | OPUAMA 16 | 2022 |
| NPDC/ELCREST | Well Completion with Omega V-zero plug | OPUAMA 15 | 2022 |
| HPTP | Well Completion and Tubing leak investigation with Omega V-zero plug | OTAKIKPO 5 | 2022 |
| SEPLAT | Cement Dumping, Magna range plug setting, Tubing Punch and Zone switching operation | OVHOR 15 AND 5 | 2022 |
| NPDC/ELCREST | Well Completion with Omega V-zero plug | OPUAMA 14 | 2022 |
| NPDC/ELCREST | Omega V-Zero Plug retrieval and Sand Bailing operation | OPUAMA 8L | 2022 |
| NDPR | BHP and Safety Valve Opening (Pneumatic) operation | OGBELE 8 | 2022 |
| NPDC/ELCREST | Swabbing and BHP Operation | OPUAMA 12 | 2022 |
| SEPLAT | Drift run, retrieval and installation of down hole safety valve | SAPELE WEST 26 | 2022 |
| HPTP | BHP/BHT Simulation run | IBIGWE 15 | 2022 |
| NPDC | Cement Dumping Operation with Smart dump bailer | JONES CREEK 31, 17 AND 40 | 2022 |
| NDPR | BHP and Safety Valve Opening (Pneumatic) operation | OGBELE 1 | 2022 |
| EXXON MOBIL | Well Abandonment with Omega V-zero plug | ASABO 11, 30 AND 37 | 2022 |
| NPDC/ELCREST | Well completion with Omega v-zero plug | OPUAMA 13 | 2022 |
| SEPLAT | BHP Operation | OBEN 44, 51, 27T, 26T, 49T, 44S, 28T | 2022 |
| HPTP | Well completions with Omega v-zero plug | IBIGWE 15 | 2022 |
| NPDC/NECONDE | Drift run, Plug setting, cement dumping and Zone switching operation | ODIDI 23, 7, 22 AND 40 | 2022 |
| NPDC/ELCREST | Well completion with Omega V-zero Plug | OPUAMA 12 | 2022 |

Provision of Slickline Services

Our Partners



JOBS EXECUTED WITH ALPHA OIL WELL TECHNOLOGIES

SLICKLINE / ADVANCED SLICKLINE JOB CARD

| | | | |
|---------------------|--|---|------|
| HPTP | PX Plug and prong Installation and gas lift change out operation | IBIGWE 14 | 2022 |
| SEPLAT | Well completion with Omega V-zero plug | AMUKPE 5 | 2022 |
| NDPR | Sand bailing Operation | OGBELE 8 | 2022 |
| NDPR | Drift run and BHP Operation | OGBELE 1 | 2022 |
| NDPR | Poor boy gas lift change out operation | OGBELE 5S | 2022 |
| NPDC/ELCREST | Well completions with Omega V-zero plug | SIBIRI 1 | 2022 |
| NPDC/NECONDE | Retrieval of down hole prong and plug | JONES CREEK 22L, 36L, 3L, 40L, 45L, 21L AND 23L | 2022 |
| NPDC/ELCREST | BHP Operation and zone isolation | OPUAMA 9, 1, 11, 8 AND 10 | 2022 |
| NPDC/ELCREST | Well completions with Omega V-zero plug | GBETIOKUN 9 | 2022 |
| NDPR | Slickline | OGBELE | 2021 |
| NPDC - OML 111 | Slickline/Advanced SL | OREDO 18 | 2021 |
| NPDC | Slickline | OREDO 18 | 2021 |
| NPDC/SYBAG - OML 65 | BHP Survey | ABURA | 2021 |
| SEPLAT | BHP Survey- Well Test Job | OBEN 51T | 2021 |
| MEFGON | Slickline services | OZA | 2021 |
| NDPR | Slickline services | OGBELE 5 | 2021 |
| NPDC/ SYBAG | Slickline/ BHP | OKPOHO | 2021 |
| NPDC | Slickline services | OREDO 19 | 2021 |
| NAOC | Slickline/ Machine Services | OBIAFU 42 | 2021 |
| SEPLAT | Slickline Intervention (Gaslift Changeout) Phase 1 | OBEN 42L | 2021 |
| NPDC | Eline Cased Hole Services | OREDO 19 | 2021 |
| SEPLAT | Slickline Well Securing | OBEN 12 | 2021 |
| NDPR | BHP Campaign | OGBELE | 2021 |
| NPDC OML 111 | Advanced Slickline Omega Plug Setting | OREDO 19 | 2021 |
| NPDC OML 111 | Advanced Slickline Omega Plug Setting | OREDO 19 | 2021 |
| SEPLAT | Slickline Service | SAPELE 25L | 2021 |
| SEPLAT | Slickline Service | OVOHR 5L | 2021 |
| NPDC | Surface Integrity Testt/Slickline. Plug Setting Well Completions | OREDO 20 | 2021 |
| ELCREST_NPDC | BHP SEWOP Rig Completion (PO No: 48170) | GBETIOKUN 7 | 2021 |
| NPDC | BHP SEWOP Well Intervention | GBETIOKUN 6T | 2021 |
| NDPR | Slickline BHP Job | OGBELE | 2021 |
| SEPLAT | SIT SLICKLINE | OBEN 44 | 2021 |
| SEPLAT | SLICKLINE SERVICES | OBEN 44 | 2021 |
| ELCREST_SEPLAT | Slickline_ 3-1/2" Dual Completions | GBETIOKUN 8 | 2021 |
| NPDC_ENERGY QUEST | Omega Plug Installation | ABURA 8L | 2021 |

Provision of Slickline Services

Our Partners



JOBS EXECUTED WITH ALPHA OIL WELL TECHNOLOGIES



SLICKLINE / ADVANCED SLICKLINE JOB CARD

| | | | |
|-------------------|--------------------------------|-------------------|------|
| NDPR | Standard slickline/ BHP | OGBELE | 2021 |
| NAOC | Slickline & Machining Services | OBIAFU 42 | 2021 |
| NPDC OML 49 | Slickline Fishing | OGAHREKI 3 | 2020 |
| ELCREST OML 40 | Slickline | GBE 5 | 2020 |
| ELCREST OML 40 | Slickline | GBE 5 | 2020 |
| NDPR | SL/BHP Gas Lift Changeout | OGBELE 5 | 2020 |
| NDPR | SL SIT- Gas Lift Changeout | OGBELE 1 | 2020 |
| NDPR | SL BHP | OGBELE 3 | 2020 |
| NDPR | SL/ BHP | OGBELE | 2020 |
| NDPR | SL | OGBELE | 2020 |
| OML 26 | Slickline | ISOKO 2 | 2020 |
| OML 26 | Slickline | ISOKO SIT | 2020 |
| NAOC | SI/Ambient valve | OBIAFU 41 | 2020 |
| NAOC | SI/Ambient valve | OGBAINBIRI DEEP 5 | 2020 |
| OML 26 | Sline | OGINI 1 | 2020 |
| OML 26 | SL SIT | OGINI 1 | 2020 |
| NDPR | SI- BHP | OGBELE | 2020 |
| NDPR | Slickline | OGBELE | 2020 |
| NDPR | Slickline | OGBELE | 2020 |
| OML 26 | SL SIT | OGINI 27 | 2020 |
| OML 26 | Slickline | OGINI 27 | 2020 |
| SYBAG | Elinie- Perf,JB | OREDO 11 | 2020 |
| OML 26 | Slickline | OGINI 1 | 2020 |
| NDPR | Slickline | OGBELE | 2020 |
| OML 34 | Slickline | UTOROGU 3 | 2020 |
| NDPR | Slickline | OGBELE | 2020 |
| NPDC - OML 49 | BHP | AROH 1/2 | 2020 |
| NDPR | BHP/ Slickline | OGBELE | 2020 |
| ELCREST OML 40 | Slickline Services | GBETIOKUN 3 | 2019 |
| NPDC/ND WESTERN | Slickline | UGHELLI 33 | 2019 |
| NPDC- OML 26 | Slickline Services | OZORO 1 | 2019 |
| NPDC/ND WESTERN | BHP | UTOROGU | 2019 |
| ELCREST OML 40 | Slickline Services | GBETIOKUN 3 | 2019 |
| NPDC- OML 65_PED | Slickline Services | ABURA 2ST | 2019 |
| NPDC - OML 65_PED | Slickline Services | ABURA 5 | 2019 |
| ELCREST OML 40 | Slickline Services | GBETIOKUN 3 | 2019 |
| ELCREST OML 40 | SL/Swabbing/Pumping/DHSIT/BHP | GBETIOKUN 1,3 | 2019 |
| ELCREST OML 40 | SL/Swabbing/Pumping/DHSIT/BHP | GBETIOKUN 1,3 | 2019 |
| NPDC/ND WESTERN | Slickline Services | UGHELLI 35 | 2019 |
| NPDC/ND WESTERN | Slickline Services | UTOROGU 33 | 2019 |

Provision of Slickline Services

Our Partners

AOS Orwell™



SLICKLINE / ADVANCED SLICKLINE JOB CARD

| | | | |
|------------------|---------------------------------|------------------------|------|
| NPDC/ND WESTERN | Slickline Services/ GYRO Survey | UGH 10,18,23,24,25, | 2019 |
| NPDC- OML 26 | Slickline service | OZORO 1 | 2019 |
| NPDC/ND WESTERN | SL Services | UGHELLI 31, 32 | 2019 |
| ELCREST OML 40 | SL Services | GBE 1,3 | 2019 |
| ELCREST OML 40 | SL Services | GBE 1,3 | 2019 |
| ELCREST OML 40 | SL Services | OPUAMA 7 | 2019 |
| NAOC | SL Services | IDU 10SS | 2019 |
| NAOC | SL Services | IDU 10LS | 2019 |
| NAOC | SL Services | EBOCH 6LS | 2019 |
| NAOC | SL Services | EBOCHA 2LS | 2019 |
| NAOC | SL Services | EBOCHA 2LS | 2019 |
| NAOC | SL Services | EBOCHA 6SS | 2019 |
| NAOC | SL Services | TEBIDABA 10T | 2019 |
| NAOC | SL Services | OBRIKOM 09T | 2019 |
| NPDC/ND WESTERN | Slickline | UGHELLI 31T | 2019 |
| ELCREST OML 40 | SL- Drift, BHP, PCE | OP09SS/LS | 2019 |
| ELCREST OML 40 | SL- Drift, BHP, PCE | GBE 03 | 2019 |
| OML 26 | SL/ SIT | OGINI 20 | 2019 |
| ELCREST OML 40 | Slickline | OP 7 | 2019 |
| ELCREST OML 40 | Slickline | GBE 3 | 2019 |
| AGIP/HES | Slickline | OGBAINBIRI 6 | 2019 |
| AGIP/HES | Slickline | OGBAINBIRI 6 | 2019 |
| AGIP/HES | Slickline | OGBAINBIRI 6 | 2019 |
| NDPR | Slickline | OGBELE | 2019 |
| NPDC/ND WESTERN | Slickline | UGHELLI 36 | 2019 |
| NPDC/ND WESTERN | Slickline | UGHELLI 31 | 2019 |
| ELCREST OML 40 | Well Intervention/BHP | OP 9ST | 2019 |
| ELCREST OML 40 | Slickline | OP 1 | 2019 |
| ELCREST OML 40 | Slickline | OP 9 | 2019 |
| ELCREST OML 40 | Slickline | GBE 04 | 2019 |
| NPDC/ ND WESTERN | Slickline- Fishing | UGHELLI 31T | 2019 |
| OML 26 | Slickline | OGINI 1 | 2019 |
| NDPR | Slickline | OGBELE 7 | 2019 |
| ELCREST OML 40 | Slickline | OP 9 | 2019 |
| ELCREST OML 40 | Slickline | GBE 4 | 2019 |
| NDPR | SI/BHP | OGBELE 7 | 2019 |
| SYNERGY | Slickline | UGHELLI 31 | 2019 |
| ELCREST OML 40 | Slickline | OP WELLS | 2019 |
| ELCREST OML 40 | Slickline | OP WELLS | 2019 |
| ELCREST OML 40 | SI/BHP/MANIFOLD | OP1,7,10,11 | 2019 |

Provision of Slickline Services

Our Partners



JOBS EXECUTED WITH ALPHA OIL WELL TECHNOLOGIES

SLICKLINE / ADVANCED SLICKLINE JOB CARD

| | | | |
|-----------------|--|--------------------|------|
| NPDC/ND WESTERN | Slickline | UGHELLI 18 | 2018 |
| NPDC/ND WESTERN | BHP | UGHELLI WEST | 2018 |
| NPDC/ND WESTERN | BHP - Community Development | FTO | 2018 |
| NPDC/ND WESTERN | Slickline | UGHELLI 18 | 2018 |
| NPDC/ND WESTERN | Slickline | UGHELLI GYRO | 2018 |
| NPDC/ND WESTERN | Slickline | UGHELLI 18T | 2018 |
| NPDC/ND WESTERN | Slickline | UGHELLI 18T | 2018 |
| NPDC/ND WESTERN | Slickline | N/A | 2018 |
| ELCREST-OML40 | Slickline | OPUAMA 9 | 2018 |
| NPDC/ND WESTERN | Slickline Completion | UGHELLI 33T | 2018 |
| ELCREST-OML40 | Slickline Drift/SSL | OPUAMA 10 | 2018 |
| NPDC - OML 65 | Slickline | PED -ABURA 2ST | 2018 |
| ELCREST-OML40 | Swabbing | OPUAMA 10 | 2018 |
| ELCREST-OML40 | Slickline Completion | UBIMA 1 | 2018 |
| ELCREST-OML40 | SL/Swabbing/Pumping/BHP/Sand Bailing/PLT | OPUAMA 7,8,9,11 | 2018 |
| ELCREST-OML40 | SL/Swabbing/Pumping/BHP/Sand Bailing/PLT | OPUAMA 7,8,9,11 | 2018 |
| ELCREST-OML40 | SL/Swabbing/Pumping/BHP/Sand Bailing/PLT | OPUAMA 7,8,9,11 | 2018 |
| ELCREST-OML40 | SL/Swabbing/Pumping/BHP/Sand Bailing/PLT | OPUAMA 7,8,9,11 | 2018 |
| ELCREST-OML40 | SL/SIT | UBIMA 1 | 2018 |
| ELCREST-OML40 | SL/Safety Valve | OPUAMA 1 | 2018 |
| ELCREST-OML40 | SL/PCE | OPUAMA 7 | 2018 |
| ELCREST-OML40 | Opuama | OPUAMA 9 | 2018 |
| ELCREST-OML40 | SL/PLT | OPUAMA 7 | 2018 |
| ELCREST-OML40 | Slickline | UBIMA 1 | 2018 |
| ELCREST-OML40 | Slickline | UBIMA 1 | 2018 |
| ELCREST-OML40 | SL- Plug setting | GBETIOKU 1 | 2018 |
| NPDC/ND WESTERN | Training | OML 34 | 2018 |
| ELCREST-OML40 | SL - WRSCSSV Redressing | OPUAMA 1 | 2018 |
| NPDC/ND WESTERN | Slickline Plug Setting & Retrieval | UGHELLI 34 | 2018 |
| ELCREST-OML40 | Slickline - SIT | GBETIOKU 3 | 2018 |
| HES-ADDAX | PCE Services | ADDAX | 2018 |
| NPDC/ND WESTERN | Slickline | UGHELLI 32 | 2018 |
| NPDC/ND WESTERN | Slickline | UGHELLI 31T | 2018 |
| NPDC/ND WESTERN | Slickline AVA plug Retrieval | UGHELLI 33T | 2018 |
| | | | |

Provision of Slickline Services

Our Partners



RECENT JOB 2025 ONGOING
Road Construction of OML 65 Linking Well 6 & 9 and Well 12



RECENT JOB 2025 ONGOING
CONSTRUCTION OF WASTE PIT AND CORAL PIT



Picture Gallery



Edo Refinery and Petrochemical Lab Equipment and Procurement, installation and Maintenance



CSU Column Foundation job at EPF OML 13 Sterling Global Akwa Ibom State



6 Celler Rig Matt and Fundation Job at UTA. A replacement OML Akwa Ibom State

Equipment Gallery



CT Support Equipment



Warehouse



Nitrogen Tank



Compressor



Filtration Equipment



Coiled Tubing Equipment



Fabrication Equipment



Chemical Injection Pump



Holding Tank

CLIENTS





Contact

Head Office

Plot C3 Rumuogba Estate, Artillery Port Harcourt, Rivers State, Nigeria.
(Shaka's Place, Opp. Fidelity Bank, Aba Road)

Phone Number

+2349133677145, +2348060983535, +234706670140

Email Address

grawillspecialty@gmail.com

www.grawillspecialtyltd.com



Grawills Specialty Limited